



Stata Installation Instructions

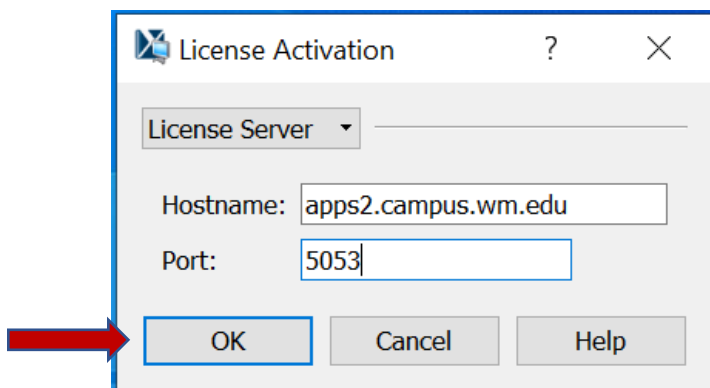
Platform: Windows (v. 7, 8, and 10)

Step 1 (Install X-Win32 2012)

- [Click here](#) to download X-Win32 2012.
- Go to the downloads folder and double click X-Win32 2012.
- Welcome to the InstallShield Wizard for X-Win32 2012. (Click **Next**)
- Accept the license agreement. (Click **Next**)
- Customer Information. (Accept the default and Click **Next**)
- Destination Folder. (Accept the default and Click **Next**)
- Accept the default setup type [complete] and (Click **Next**).
- Click **Install**.
- Do you want to allow this app to make changes? (Click **Yes**)
- Click **Finish**.

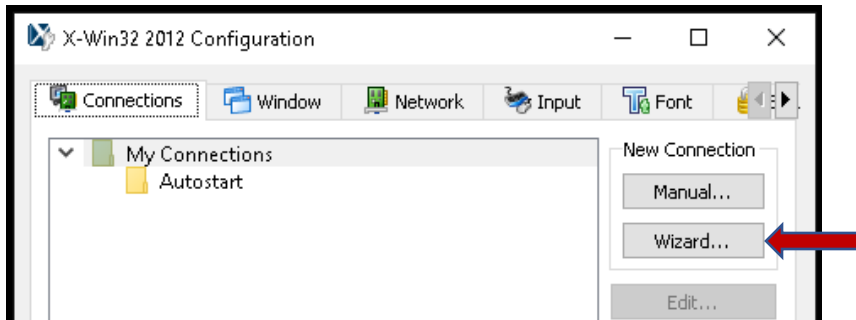
Step 2 (Configure X-Win32 2012 to access the stat server)

- Go to start, programs and open X-Win32 2012
- License Activation Window opens the first time X-Win32 is launched. Pull down to **License Server**, Hostname: **apps2.campus.wm.edu**, Port: **5053**, Click **OK**.

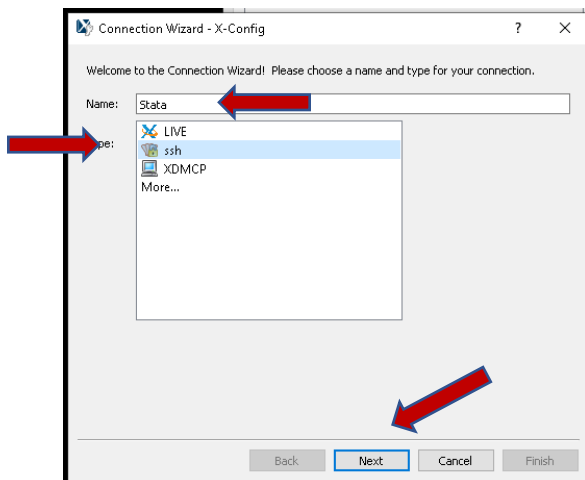




- Click **Wizard...**, located in the New Connection box in the column on the right of the window.

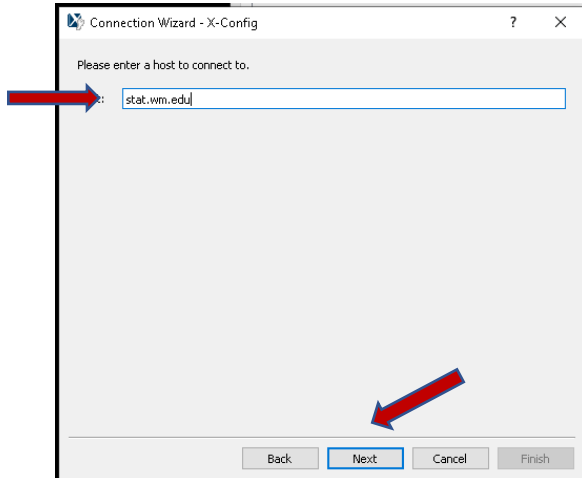


- Enter **Stata** for the name of the connection. Select **ssh** as the type. (Click **Next**)

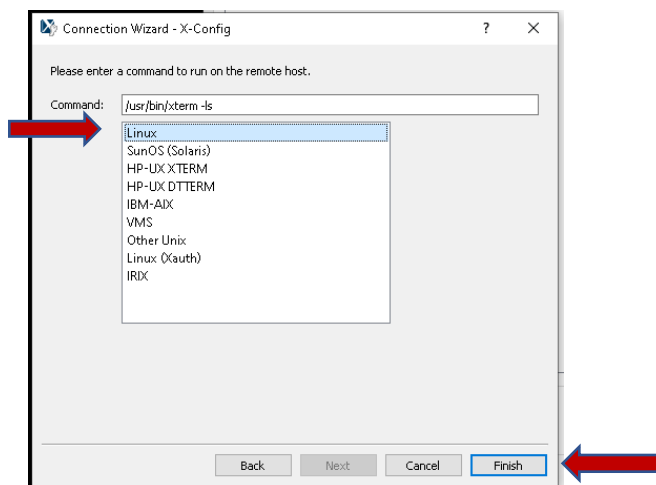




- Enter **stat.wm.edu** as the host. (Click **Next**)



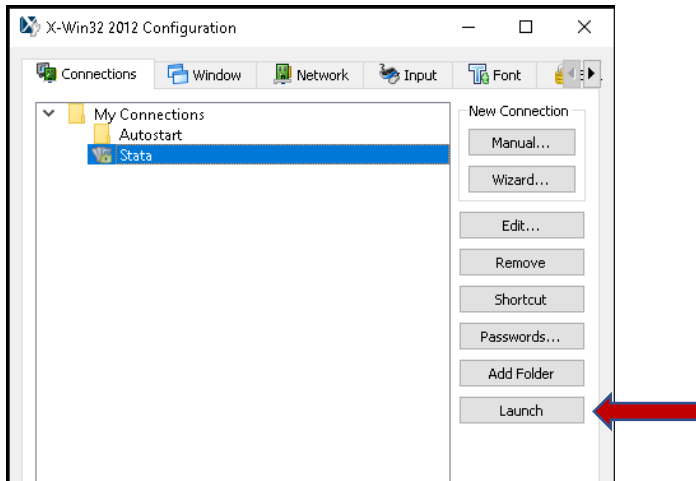
- Enter your W&M username and password. (Click **Next**)
- Enter a command to run on the remote host (You do not need to type the command): Select **Linux** and click **Finish**.



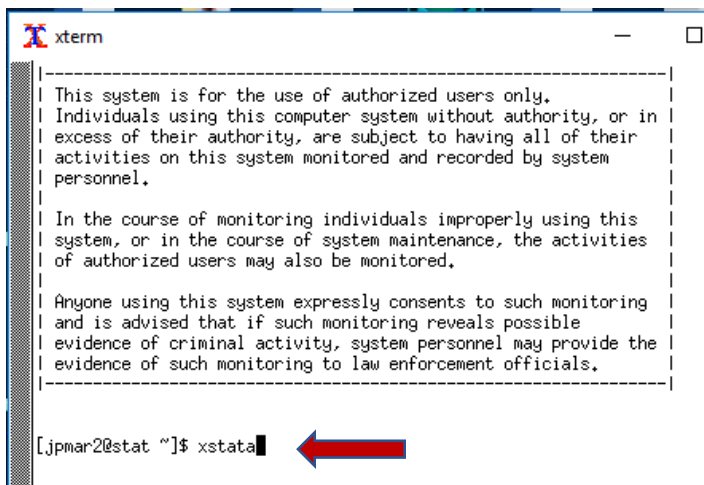


Step 3 (Launch Stata)

- Go to start, programs and open X-Win32 2012.
- Select **Stata** and click **Launch**.



- The xterm window opens. Type **xstata** to launch Stata.





- Stata Window.

